

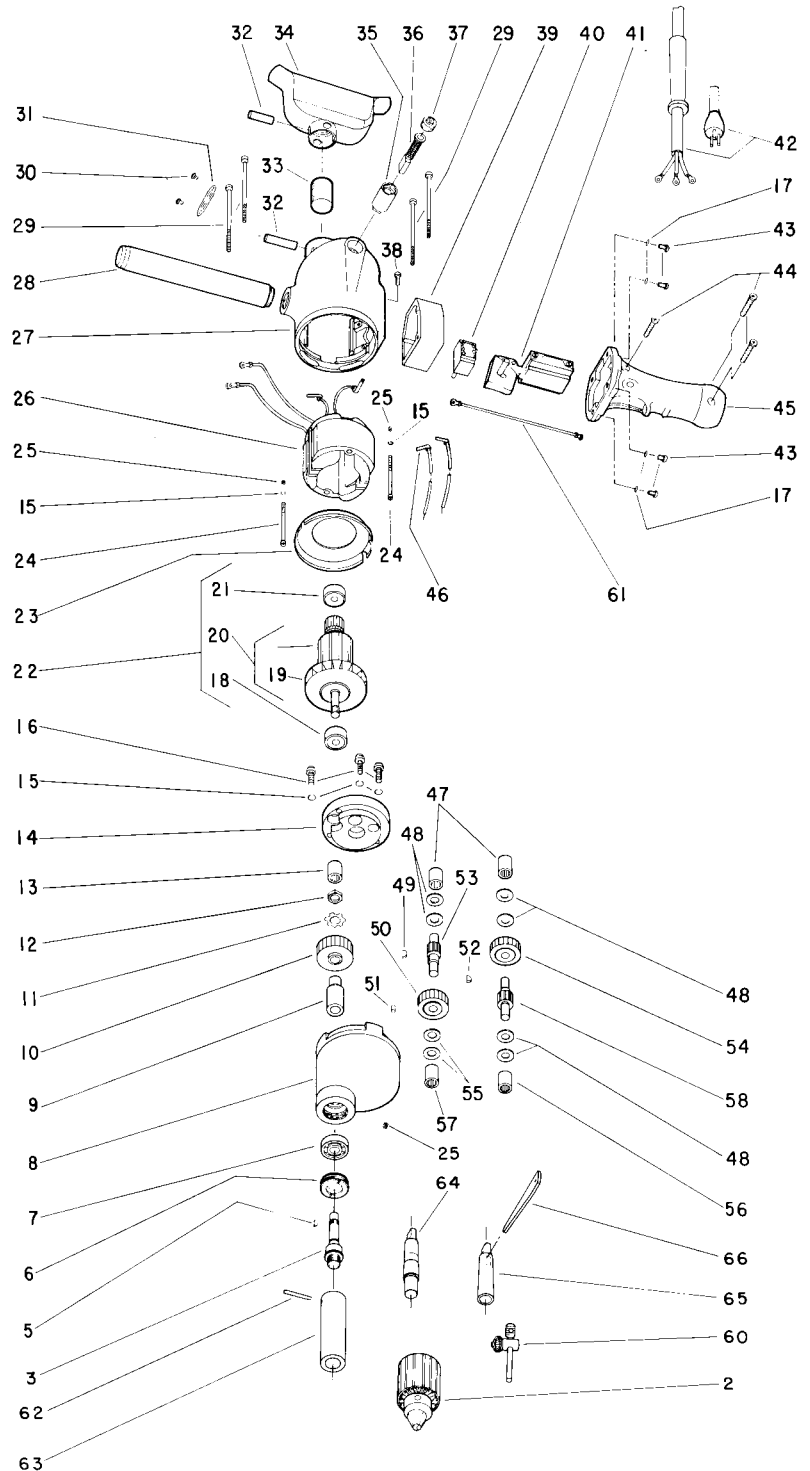


**NOTE: Parts are no longer available for this tool.**

**The manual will continue on the next page.**



# PARTS LIST FOR 1560-2MT, 1560/2-3MT, 1560R2MT, 1560R/2-3MT 3/4" HEAVY DUTY ELECTRIC DRILL (SERIAL "F")



**SIoux**  
**TOOLS INC.**

2901 FLOYD BOULEVARD ■ SIOUX CITY, IOWA 51102-0507 ■



# PARTS LIST FOR 1560-2MT, 1560/2-3MT, 1560R2MT, 1560R/2-3MT 3/4" HEAVY DUTY ELECTRIC DRILL (SERIAL "F")

Fig. No.	Part No.	Name
2.	21141A	Chuck—Jacobs 3/4" Cap.(Taper Mount) (Includes Fig. 64)(1560/2-3MT, 1560R/2-3MT)
3.	65292	Spindle—Chuck
5.	30014	Key—#404 Woodruff
6.	23042	Seal—Oil
7.	10131	Bearing—Ball
8.	12049	Case—Gear (Includes Figs. 51, 56, &57)
9.	24057	Spacer—Gear
10.	19036	Gear—Chuck Spindle
11.	25073	Washer—Lock
12.	24062	Nut—Tool Spindle
13.	10008	Bearing—Needle
14.	12040	Cover—Gear Case (Includes Fig. 47 [2] &13)
15.	09724	Washer—Lock #10 (5)*
16.	07119	Screw—Phil. #10-24 x 1 (3)*
17.	35234	Washer (4)*
18.	10251	Bearing—Ball
19.	21569A	Fan
20.	65293	Armature with Fan
21.	10210	Bearing—Ball
22.	65330	Ass'y—Armature, Fan, & Bearing
23.	25079	Plate—Baffle
24.	07136	Screw—#10-24 x 2 1/8 (2)*
25.	07000	Screw—#10-24 x 3/16 (3)*
26.	28949	Field—Motor (Rev)
	28938	Field—Motor (Non-Rev)(Includes Fig. 46 [2])
27.	12777	Housing (Includes Figs. 25 & 35 [2 each])
28.	40096	Handle—Side
29.	07130	Screw—#10-24 x 5 11/16 (4)*
30.	06090	Screw—#4 x 1/2 (6)*
31.	23000	Ass'y—Cap Inspection Hole (3)*
32.	30761	Pin (2)*
33.	14148	Insulator
34.	53728	Ass'y—Spade Handle
35.	18083	Holder—Brusher (2)*
36.	18031	Brushes—Motor (Pair)
37.	18120	Cap—Holder Brush (2)*
38.	07204	Screw—Ground #10-24 x 5/16
39.	12393	Adaptor—Reversing Switch (1560R2MT, 1560R/2-3MT)
40.	18383	Switch—Reversing (Includes Fig. 61)
	30697	Locknut—Hex (2)* (1560R2MT, 1560R/2-3MT)
41.	18204	Switch
42.	18416	Ass'y—Cord & Terminals w/Strain Relief
	18417	Ass'y—Cord & Terminals (30 Ft.) w/Strain Relief
43.	07240	Screw—#10-24 x 1 3/4 (4)* Reversing Units
	07223	Screw—#10-24 x 5/8 (4)* Non-Reversing Units
44.	06657	Screw—#8-32 x 1 1/8 (3)*
45.	53786	Ass'y—Handle

Fig. No.	Part No.	Name
46.	18860	Clip—Spring (Only)(2)*
	28882	Brush Lead (Left)
	28883	Brush Lead (Right)
47.	10003	Bearing—Needle (2)*
48.	25075	Spacer (6)*
49.	30010	Key—Woodruff (Modified)
50.	19038	Gear—2nd Compound
51.	24009	Pin—Dowel
52.	30001	Key—Woodruff (#304)
53.	19408	Pinion—2nd Compound
54.	19035	Gear—1st Compound
55.	25074	Washer—Thrust (2)*
56.	10005	Bearing—Needle
57.	10007	Bearing—Needle
58.	19410	Pinion—1st Compound
60.	30031	Key—Chuck
	14273	Holder—Chuck Key (Not Shown)
61.	28147	Ass'y—Lead Wire (Reversing Units Only)
62.	30756	Pin—Taper (#3 x 1 3/4)(1560R2MT, 1560R/2-3MT)
63.	1582A	Chuck #2 Morse Taper (1560-2MT, 1560R2MT) (Includes Fig. 66)
	1583	Chuck #3 Morse Taper (1560/2-3MT, 1560R/2-3MT) (Includes Fig. 66)
	65565	Ass'y—#2 Morse Taper Chuck & Spindle (Includes Figs. 62 & 66)(1560R2MT)
	65567	Ass'y—#3 Morse Taper Chuck & Spindle (Includes Figs. 62 & 66)(1560R/2-3MT)
64.	64179	Arbor #3MT to #3JT (1560R/2-3MT, 1560/2-3MT)
65.	1583A	Reducing Sleeve (#3 to #2) (Includes Pt. No. 30033 Drift Key) (1560R2MT, 1560R/2-3MT)
66.	30033	Key—Drift #2 (1560R2MT, 1560R/2-3MT, 1560-2MT, 1560/2-3MT)
	30032	Key—Drift #3 (1560/2-3MT, 1560R/2-3MT)

#### PARTS NOT SHOWN

09954	Screw—Drive (2)*
65297	Name Plate (1560-2MT)(Includes [2] Pt. No. 09954)
65298	Name Plate (1560/2-3MT)(Includes [2] Pt. No. 09954)
65566	Name Plate (1560R2MT)(Includes [2] Pt. No. 09954)
65568	Name Plate (1560R/2-3MT)(Includes [2] Pt. No. 09954)

\*Order Quantity As Needed

Furnish Catalog, Serial and Model Number When Ordering Parts

## SIoux TOOLS INC.

2901 FLOYD BOULEVARD ■ SIOUX CITY, IOWA 51102-0507 ■

Printed in U.S.A.

This pdf incorporates the following model numbers:

1560-2MT, 1560/2-3MT, 1560R2MT, 1560R/2-3MT